



The innovation you  
need in buying and managing  
professional services.

## NEPRO<sup>3</sup> Professional Services Solution

### Category List

Working in partnership





## Hello and welcome

NEPRO<sup>3</sup> is a fully compliant procurement framework which assists the UK public sector to buy and manage specialist professional services from a choice of regional and national suppliers. It allows buyers to move quickly and at the lowest possible cost, whilst achieving better outcomes.



Bloom Procurement Services have been the UK's exclusive operator of the NEPRO solution, on behalf of NEPO (the North East Procurement Organisation), since its original inception in 2012.

NEPRO<sup>3</sup> will deliver substantial savings to the public sector. On average, public sector buyers currently using the NEPRO<sup>3</sup> solution save 14% against budget.

For suppliers, NEPRO<sup>3</sup> will open up the market, removing the traditional barriers of marketing and selling to public sector bodies. Instead they compete on a level playing field against larger suppliers for contracts they might not otherwise have access to.

This document is a guide to all 20 categories of public sector spend available through the NEPRO<sup>3</sup> solution.

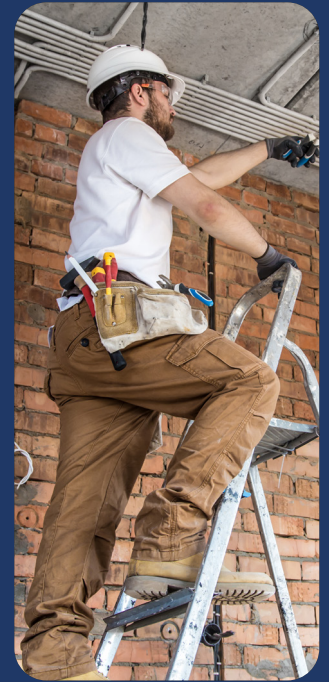
# Contents

|  |                |
|--|----------------|
| Asset Management and Delivery                | <b>Page 4</b>  |
| Business Strategy                            | <b>Page 4</b>  |
| Commercialisation and Public Sector Services | <b>Page 5</b>  |
| Construction, Design and Engineering         | <b>Page 5</b>  |
| Education, Learning and Curriculum           | <b>Page 6</b>  |
| Environment, Sustainability and Waste        | <b>Page 6</b>  |
| Environmental Health and Consumer Protection | <b>Page 7</b>  |
| Facilities Management and Catering           | <b>Page 7</b>  |
| Finance, Audit and Accounting                | <b>Page 8</b>  |
| Health and Wellbeing                         | <b>Page 9</b>  |
| Highways and Transport                       | <b>Page 10</b> |
| Housing and Community                        | <b>Page 10</b> |
| Information, Communication Technology        | <b>Page 11</b> |
| Leisure, Culture and Heritage                | <b>Page 11</b> |
| Marketing, Media and Communications          | <b>Page 12</b> |
| Organisational and Change Management         | <b>Page 12</b> |
| Planning and Development Control             | <b>Page 13</b> |
| Safeguarding                                 | <b>Page 13</b> |
| Social Care (Adults and Children)            | <b>Page 14</b> |
| Social Value and Regeneration                | <b>Page 14</b> |
| Benefits of using NEPRO <sup>3</sup>         | <b>Page 15</b> |
| Contact us                                   | <b>Page 16</b> |

# Asset Management and Delivery

The Asset Management and Delivery category focuses on fixed assets such as, land, building, equipment, facilities, machinery and vehicles. This category concentrates on the function, capability, capacity and resource control of these assets in order to maximise efficiency, usage and delivery.

- Asbestos (not removal)
- Asset Disposal
- Chartered Surveyors
- Conservation and Preservation Consultancy
- Maintenance
- PFI
- PFI Legal Services
- Professional Legal Services and Advice
- Property Consultancy
- Property Management Services
- Rating, Valuation



## Business Strategy

The Business Strategy category relates to the development of business strategies to support the operational and strategic decision making of our buying organisations. The category focuses on both internal and external strategy development including organisational, operational and outward facing delivery. It reflects organisational, service grouping or function-wide consultancy.

- Alliances/Mergers and Disinvestment
- Alternative Delivery Models
- Business Planning
- Category Management
- Commissioning
- Corporate and Service Grouping
- Corporate Operational Planning
- Corporate Performance
- Corporate Service Delivery
- Data and Analytics
- Development of Shared Services
- Disaster Recovery Systems and Testing
- Market Analysis
- New Service Development
- Outsourcing
- Policy Review and Implementation
- Process Mapping
- Procurement
- Professional Legal Services and Advice
- Risk and Opportunity Management
- Risk Mitigation
- Service Transformation and Rationalisation
- Stakeholder Management
- Supplier Relationships
- Supply Chain and Logistics
- Sustainability

# Commercialisation and Public Sector Services

The Commercialisation and Public Sector Services category is available to support the commercialisation and income generation strategy of our buyer community. It is designed to enable buyers to effectively develop their approaches to trading and exporting their services locally, regionally or nationally.

The category is aimed at those within our buyer community that are seeking to develop and create areas of expertise which could be traded.

- Capital Management
- Commercialisation
- Commercial Modelling
- Commercial Strategy Development
- Costing and Pricing
- Developing Competitive Advantage
- Financial and Legal Diligence
- Funding Applications
- Funding Opportunities
- Income Generation
- Market Analysis
- Market Exploration
- Professional Legal Services and Advice
- Portfolio Management
- Trading Arms

# Construction, Design and Engineering

The Construction, Design and Engineering category encompasses all activity associated with industrial, retail housing and office space. Engineering incorporates the creative application of scientific principles to design or develop structures, machines, apparatus, or manufacturing outside of the physical processes. The category includes planning and building control.

For the avoidance of doubt, this category does not include the actual works but rather the specialist professional services required to support the delivery of works.

- Architect
- Building Control
- Civil Engineering and Design
- Cost Consultancy
- Costing and Estimation Services
- Ecology and Green Infrastructure Services
- Mechanical and Electrical Design
- Planning
- Professional Legal Services and Advice
- Project Management
- Property Management
- Structural Engineering and Design
- Survey Services
- Urban Design

# Education, Learning and Curriculum

The Education, Learning and Curriculum category covers the full spectrum of specialist professional services required to support pre-school, primary, secondary, adult and higher education and further training. This category includes the development of strategy, policy, and new methodology of teaching and learning.

- Academic Research
- Academy Conversion
- Admission Processes and Planning
- Adult and Higher Education
- Behavioural Programmes
- Curriculum
- Educational Support
- E-learning Development
- Forecasting, Planning and Strategy
- National Policy Implementation
- NEETS
- Ofsted Audit Planning
- Pre-school Education
- Primary and Secondary Education
- Professional Legal Services and Advice
- Qualification Management and Advice
- Schools of Excellence
- Skills Training
- Special Education Needs
- Teaching and Learning
- Technology
- Training
- Training Needs Analysis

# Environment, Sustainability and Waste

The Environment, Sustainability and Waste category covers a wide spectrum from impact assessments professional advice, strategy and policy development, implementation of legislation and directives affecting delivery and processes.

- Archaeological Services
- Bio-Diversity
- Building Conservation
- Carbon Reduction
- Clean Air Zones
- Ecological
- Environmental Health
- Environmental Management Impact Assessments
- Farm and Agriculture
- Flood Risk Assessments
- Forestry and Woodlands
- Geotechnical and Geographical
- Green Technologies
- Ground Engineering and Environmental Services
- Heat Networks
- Landscape Conservation Preservation and Restoration
- Pest Control
- Pollution
- Professional Legal Services and Advice
- Surveys and Investigations
- Preservation and Restoration
- Renewable Energy and Sustainability
- Resource Efficiency Behaviour Change Programmes
- Retrofit and Decarbonisation
- Surveys and Investigations
- Sustainability (Environment and Social)
- Waste and Recycling

# Environmental Health & Consumer Protection

The Environmental Health and Consumer Protection category covers all specialist professional services related to the guidance and controls needed to comply with relevant legislation. This covers monitoring risk and responding to compliance of legislative breaches.

- Animal Health and Welfare
- Contaminated Land
- Environmental Health
- Environmental Legislation
- Fair Trading and Consumer Advice
- Food Safety and Standards
- Infectious Disease Control
- Licensing and Markets
- Occupational Safety and Health
- Pollution Control
- Private Sector Housing Enforcement
- Private Water Supplies
- Product Safety and Metrology
- Professional Legal Services and Advice

## Facilities Management and Catering

The Facilities Management and Catering category covers the integration of processes within a buying organisation to maintain and develop the agreed services to support and improve the effectiveness of its primary activities.

This category encompasses multi-disciplinary activities within the built and catering environment, as well as the management of their impact upon people and the workplace.

- Building Maintenance, Administration and Contract Management
- Commercial Feasibility and Technical Reviews
- Communication Infrastructure
- Equipment and Facilities
- Food Hygiene
- Healthy Eating Programs
- Maintaining and Developing Myriad Services
- Nutrition
- Professional Legal Services and Advice
- Property Security
- Property Strategy
- Space Management





## Finance, Audit and Accounting

The Finance, Audit and Accounting category covers all specialist professional services related to finance, accountancy and auditing. This includes all aspects of financial controls for complex project developments, incorporating the establishment of fiscal strategies, processes, policies and departmental organisation to develop financial efficiency of project delivery.

It can also apply to corporate, management, operational financial practices, capital funding, financial risk management and revenue and benefits.

- Accounting Advice and Solutions
- Accounting Services
- Acquisition Finance Solutions
- Asset Financial Management
- Audit
- Budgetary Management
- Cash Management
- Credit Services
- Debt Recovery, Restructuring and Management
- Disposals and Acquisition
- Financial and Fraud Investigation
- Financial Systems and Processes
- Forecasting and Budgets
- Foreign Exchange
- Fund Management
- Investments
- Mergers, Acquisitions and Divestments
- Pensions
- Procurement
- Professional Legal Services and Advice
- Purchasing and Procurement P2P
- Regulation Benchmarking and Statistical Analysis
- Revenue and Benefits Systems, Financial Processes and Protocols
- Risk Management
- Single Person Discount Review
- Strategic/Corporate Finance
- Taxation
- Treasury Management
- Valuation Services





## Health and Wellbeing

The Health and Wellbeing category is diverse and focuses on partnering with agencies looking at strategy, policy, service delivery, shared services, commissioning, performance management, professional advice, national and EU policy, directives and health/care and social initiatives.

- Biostatistics
- Carers
- Clinical Care
- Commissioning and Decommissioning
- Counselling
- COVID-19 Response and Recovery
- Development of Shared Services
- Diagnostic Services
- Elective Care
- Emergency Services
- Health and Safety Legislation
- Health Issues and Improvement
- Home Independence
- Inspections and Audits
- Learning Difficulties
- Locums
- Long-Term Care
- Medical Professionals
- Mental Health and Wellbeing
- Occupational Health
- Older Persons
- Personalisation
- Physical Disabilities
- Physiotherapy
- Professional Legal Services and Advice
- Primary Care
- Public Health Schemes
- Revenue Optimisation and Funding
- Risk Assessments and Controls
- Safe Working Procedures
- Service Transformation and Rationalisation
- Social Care
- Speech and Language Development
- Substance Abuse and Addiction
- Support for Carers

# Highways and Transport

The Highways and Transport category includes the design, planning engineering, structural testing and evaluation associated with highways and public/passenger transport. The category includes service planning and monitoring. It spans both strategic and operational aspects of the services including all transportation types for public, commercial and commuter requirements in both the private and public sector.

- Costing and Estimation Services
- Civil Engineering and Design
- Life Cycle Planning
- Mechanical and Electrical Design
- Park and Ride Schemes
- Professional Legal Services and Advice
- Public and Passenger
- Real Time Traffic Monitoring and Information
- Road Safety Audits and Feasibility Studies
- Structural Engineering and Design
- Survey Services
- Telematics
- Traffic Modelling, Management and Planning



# Housing and Community

The Housing and Community category covers a range of activities, including social inclusion, policing, neighbourhoods, community safety and health, area action partnerships, community integration and legislative changes predominately relating to people. Housing includes all aspects of planning, consultation, regeneration, social landlords, decent homes and community programmes.

- Access and Social Inclusion
- Arms-Length Management Organisations
- Charity / Third Sector
- Commercial and Efficiency Reviews of Public Services
- Commissioning Models
- Community Engagement and Partnerships
- Decent Homes
- Fire Safety and Compliance
- Funding including Grant Applications and Income Generation
- Housing Management
- Housing Supply
- Improvement Programmes
- Increasing Expertise in Local Businesses
- Judicial and Community Support
- Large Scale Voluntary Transfer
- Licensing
- Local Economic Assessment
- Master Planning
- Neighbourhood Sustainability and Investment
- Professional Legal Services and Advice
- Policing Services
- Private and Social Landlords
- Social Housing
- Strategic Housing Assessments
- Tenant Participation Schemes
- Valuation Services



## Information, Communication & Technology

The Information, Communication and Technology category includes software, hardware and software applications, infrastructure, networks and the management of maintenance and systems. Our buyer community will gain access to all services and technology applications associated with telecommunications.

- Application Delivery and Services
- Business Case Development
- Business Continuity Planning
- Cloud Solutions
- Cyber Security
- Data and Management Information
- Disaster Recovery Systems and Testing
- Forecasting, Planning and Strategy
- Hardware Assessment and Selection
- ICT Infrastructure
- ICT Management
- Investigative and Testing Services
- Maintenance and Support
- Networks and Infrastructure
- Policy Advice and Review
- Professional Legal Services and Advice
- Programme and Project Management
- Security and Risk Assurance
- Server Solutions
- Software Assessment and Selection
- System Appraisals and Opportunity Definition
- Systems and Software Development
- Telecommunications
- Viability Studies
- Web Services

## Leisure, Culture and Heritage

The Leisure, Culture and Heritage category covers the physical and intangible attributes of a community or society that are inherited from past generations.

This category aims to capture the specialist professional services requirements related to the preservation and conservation of cultural heritage.

- Archaeology
- Art/Artefacts Maintenance and Management
- Biodiversity
- Commercial and Efficiency Reviews
- Funding and Funding Applications
- Heritage
- Heritage Building Maintenance and Management
- Landscape Services
- Monument Maintenance and Management
- Museum, Theatre and Cultural Services
- Professional Legal Services and Advice
- Sport and Library Services
- Tourism
- Traditions
- Trusts and Joint Ventures

# Marketing, Media and Communications

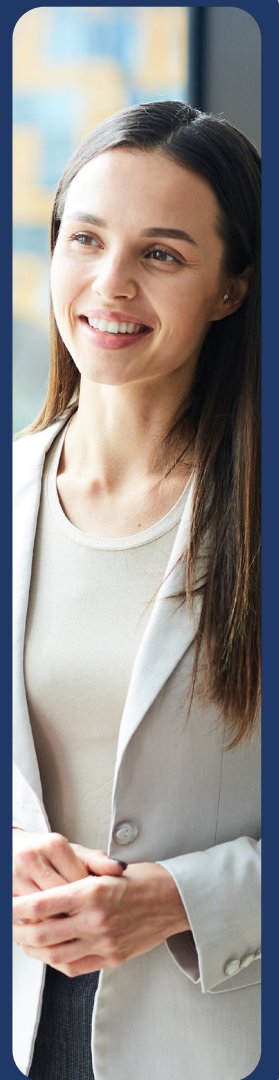
The Marketing, Media and Communications category encompasses design, creativity, communication, public relations, media types and channels. Consultancy may relate to corporate or service group wide strategies and policy. The category also includes outward facing marketing and communication programmes.

- Advertising
- Branding
- Communication
- Consultation
- Creativity
- Crisis Management
- Design (Outdoor Media)
- Design (Printed Matter)
- Design (Radio)
- Design (TV)
- Events Management
- Marketing Agencies
- Market Research
- Media Relations
- Photography
- Professional Legal Services and Advice
- Public Relations
- Social Media
- Web Design

## Organisational and Change Management

The Organisational and Change Management category relates to implementing strategic change, technological change and structural change. The category is focused on organisational, service grouping, outward facing delivery programmes, teams and individuals transitioning. The category includes all aspects of HR, learning, leadership, people and development including strategies, policies, processes and organisational function and change.

- Absence Management
- Change Management Strategy
- Changing Attitudes and Behaviour
- Culture Change
- Effective Change Management
- Employee Welfare
- Employment Law
- Equality and Diversity
- Executive Recruitment
- Industrial Relations
- Job Evaluation
- Leadership Development
- Operational and Organisational Diagnosis
- Organisational Diagnosis
- Performance Management
- Professional Legal Services and Advice
- Programme & Project Management
- Re-Engineering Systems and Processes
- Restructuring and Managing People
- Reward and Remuneration
- Service Rationalisation
- Service Transformation
- Skills Analysis and Audit
- Staff Recruitment and Selection
- Strategic Change
- Structural Change
- Sustainability
- Technological Change
- Transformation
- Value for Money





## Planning and Development Control

The Planning and Development Control category covers the procedures that are responsible for planning applications for new developments or building enhancements.

- Adverts and Applications
- Landscapes
- Listed Buildings
- Professional Legal Services and Advice
- Protected Trees

## Safeguarding

The Safeguarding category focuses on the protection of vulnerable adults or children against abuse or neglect. Safeguarding ensures people are receiving the support they require from our buyer community for their wellbeing, empowerment and a safe environment for living.

- Abuse
- Discrimination
- Domestic Abuse
- Emotional Abuse
- Financial Abuse or Mistreatment
- Modern Slavery
- Neglect
- Organisational Abuse
- Physical Abuse
- Professional Legal Services and Advice
- Safeguarding – Adults
- Safeguarding – Children
- Self-Neglect
- Sexual Abuse



## Social Care (Adults and Children)

The Social Care (Adults and Children) category focuses on organisational, service grouping, outward facing delivery programmes, teams and individuals. It includes all aspects of adults, children and young person's relating to strategy, policy, processes, function and change.

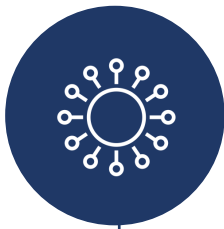
- Adoption and Fostering
- Alcohol, Drugs and Substance Misuse
- Children in Need
- Clinical Evaluations
- Collaborative Working Arrangements
- Commissioning and Decommissioning
- Community
- Health Issues
- Learning Disabilities
- Outreach Programs
- Professional Legal Services and Advice
- Safeguarding – Adults
- Safeguarding – Children
- Social Inclusion
- Youth Services

## Social Value and Regeneration

The Social Value and Regeneration category relates to the development of business, social, employment, regeneration and economic wealth. The category focuses on the external strategies and policies put in place to enable delivery.

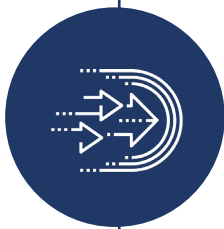
- Business Growth
- Business Regeneration
- Delivering Social Value
- Economic Appraisal and Analysis
- Economic Policy and Development
- Employment
- Master Planning
- Planning Policy
- Professional Legal Services and Advice
- Regeneration Strategy
- Regeneration
- Tourism
- Town Planning
- Wealth Creation

# Benefits of using NEPRO<sup>3</sup>



## Choice

20 categories and over 380 sub-categories.



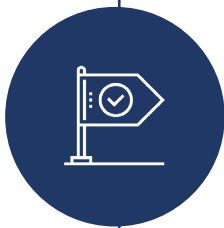
## Speed

One of the fastest and most cost effective routes to market, enabling contracts to be compliantly awarded in as little as 15 days.



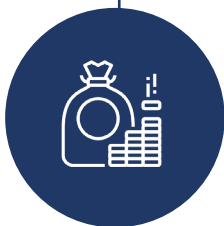
## Delivery assurance

Full management of all contractual, commercial and delivery risk, through one contract with in-built IR35 safeguards and IP protection.



## Compliant route to market

Transparent performance and governance management for each project.



## Value for money

Average savings of 14% against budget.



Start your journey with NEPRO<sup>3</sup>

**Contact Bloom**

**Call:** 020 3948 9400

**Email:** [hello@bloom.services](mailto:hello@bloom.services)

**Online:** [www.bloom.services](http://www.bloom.services)

**X (formerly Twitter):**  
[@TalkBloom](https://twitter.com/TalkBloom)

**LinkedIn:** Bloom  
Procurement Services

**Contact NEPO**

**Call:** 0191 638 0040

**Email:** [nepro@nepo.org](mailto:nepro@nepo.org)

**Online:** [www.nepo.org](http://www.nepo.org)

**X (formerly Twitter):**  
[@NEPOprocurement](https://twitter.com/NEPOprocurement)

**LinkedIn:** NEPO (North East  
Procurement Organisation)

